

State of Wyoming Corner Record

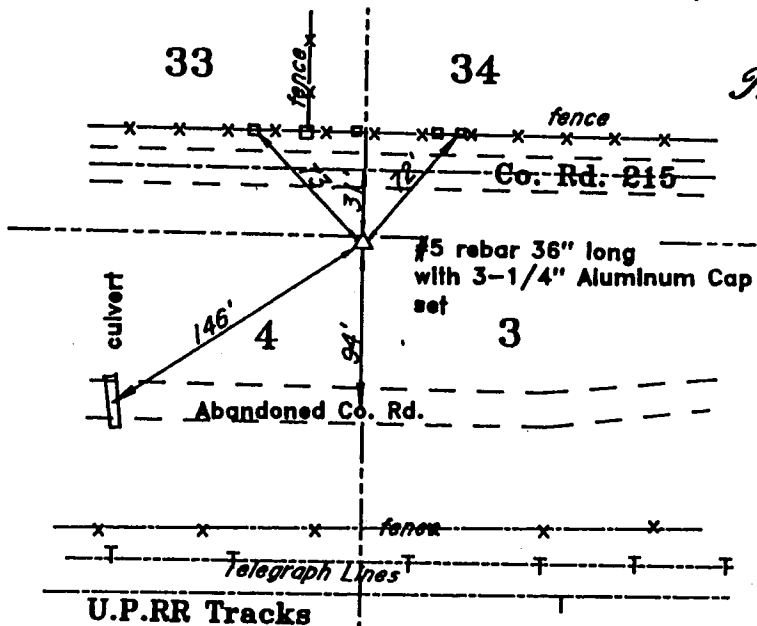
(In compliance with the CORNER PERPETUATION AND FILING ACT, Wyoming Statutes, 1977, Section 36~11~101, et. seq., and the Rules and Regulations of the Board of Registration for Professional Engineers and Professional Land Surveyors)

The Reverse side of this form may be used if more space is needed.

The record of the original survey and the citation of the source of historical information (if the corner is lost or obliterated) The description of the corner monumentation evidence as found and/or monument and accessories established to perpetuate the location of this corner. A sketch of the relative location of the monument, accessories, and reference points with course and distance to the adjacent corner(s) (if determined in this survey). The method and rationale for reestablishment of the lost or obliterated corner.

GLO: " S 89°51' E along South boundary of Sec 33, 4.89 chains to center of U.P.R.R track, Bears N 77°52'E & S 75°03'W. 27.31 chains to center of U.P.R.R track, Bears S 82°19'E & N 82°19'W, 40.0 chains set Granite Boulder 16"X12"X7" for 1/4 Sec. Cor., 80.00 chains set a limestone 24"X16"X8" for corner to Sec.33/34/3 & 4."

SET: 6/8"X36" rebar with a 3-1/4" Aluminum Cap South of County Road 215, North of the abandoned R/W of the old alignment of the County Road and Northerly from the R/W of the U.P.R.R R/W. See Dwg.



T. 15 N. R. 64 W.

T. 14 N. R. 64 W.



97 SEP 29 PM 12 02

LARAMIE COUNTY CLERK
CHEYENNE, WY.

210936

Date of Field Work: _____

Office Reference: _____

Sub No.

Gross Index Diagram

	1	2	3	4	5	6	7	8	9	10	11	12	13	14	15	16	17	18	19	20	21	22	23	24	25	26
A																										
B																										
C																										
D																										
E																										
F																										
G																										
H																										
I																										
J																										
K																										
L																										
M																										
N																										
O																										
P																										
Q																										
R																										
S																										
T																										
U																										
V																										
W																										
X																										
Y																										
Z																										
	1	2	3	4	5	6	7	8	9	10	11	12	13	14	15	16	17	18	19	20	21	22	23	24	25	26

Terrestrial Surveying & Mapping Co.

1187 Terry Ranch Road Cheyenne, Wyoming 82007

Phone: (307) 634-8300

This corner record was prepared by me or under my direct supervision.

Seal and Signature



Corner Name: 33, 34 Section: 15 T. 14 N. R. 64 W. 666 P.M. Cross Index No. A-13

300K 1461

1254